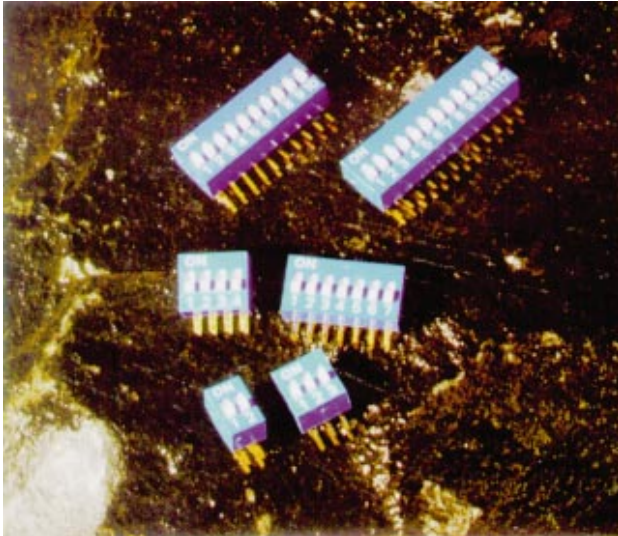
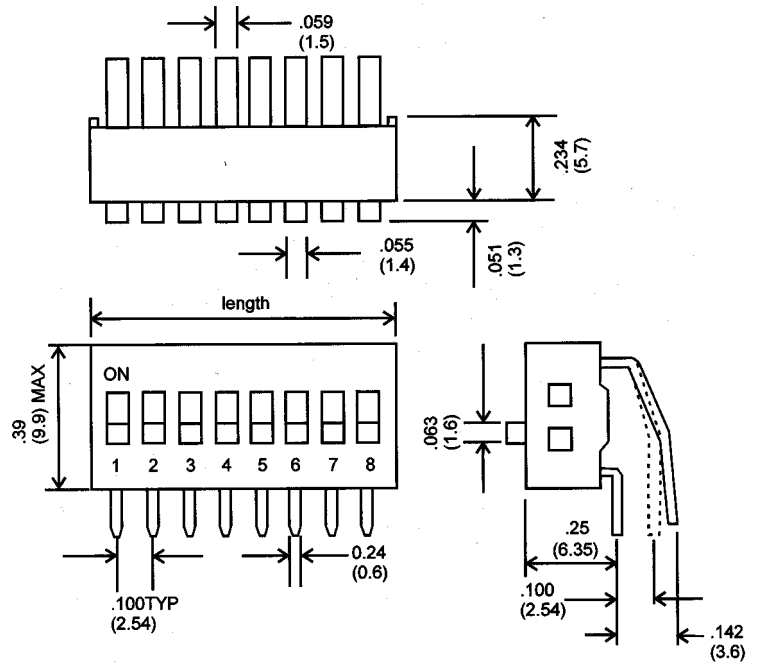


RD-Series

Right Angle DIP / abgewinkelter DIP



Dimensions / Abmessungen

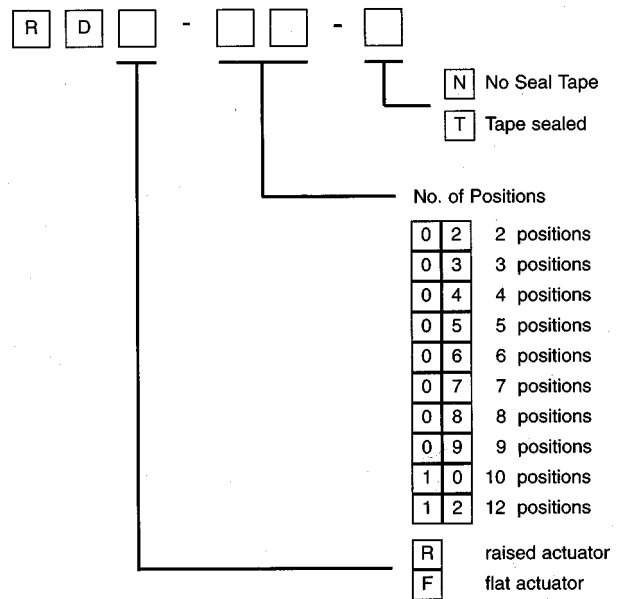


Specification / Spezifikation

Mechanical Life: min 10.000 switch operations each
 Electrical Life: min 5.000 switch operation each
 50 mA, 24 VDC
 Operation force: less than 800 g
 Non switching: 100 mA, 50 VDC
 Switching: 50 mA, 24 VDC
 Circuit: single pole, single contact

Mechanische Lebenserwartung:
 min 10.000 Schaltoperation
 Elektrische Lebenserwartung:
 min. 5.000 Schaltoperation
 Schaltkraft: kleiner 800 g
 Dauerlast: 100 mA, 50 VDC
 Schahlast: max 50 mA, 24 VDC
 Schaltung: einpoliger Schalter

How to order / Bestellanleitung



Example: RDR-12-N is a Right Angle DIP with 12 positions, raised actuator, "On" is up (= "Off" is up) and No Sealing Tape

Models / Modelle

Model No. Modellnummer	No. Positions Schalterzahl	Length in mm" Länge in mm"
RD-02	2	6,08/(0,239)
RD-03	3	8,62/(0,339)
RD-04	4	11,16/(0,439)
RD-05	5	13,7/(0,539)
RD-06	6	16,24/(0,639)
RD-07	7	18,78/(0,739)
RD-08	8	21,32/(0,839)
RD-09	9	23,86/(0,939)
RD-10	10	26,4/(1,039)
RD-12	12	31,4/(1,239)