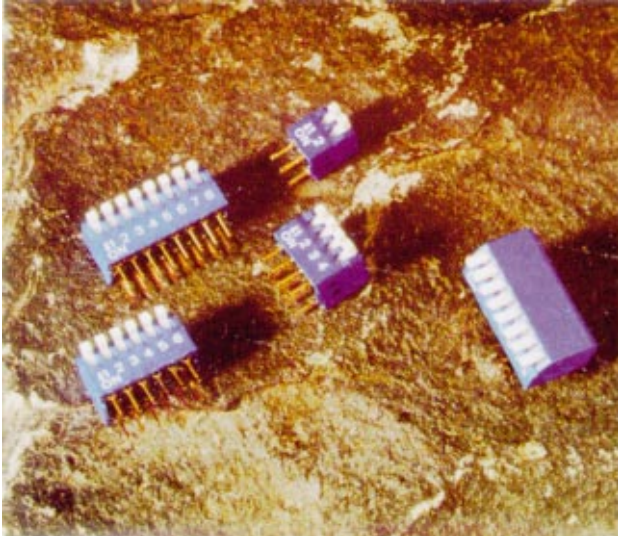
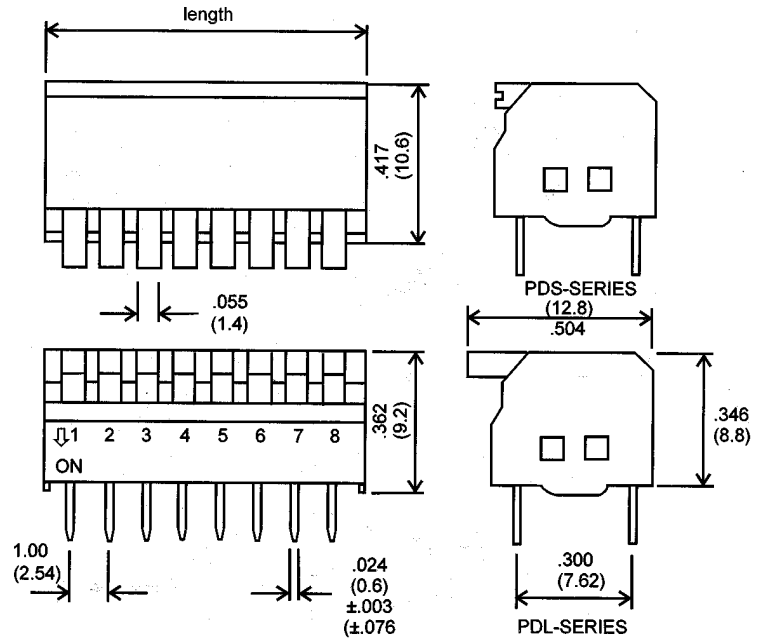


PD-Series

Pianotype / Klaviertype



Dimensions / Abmessungen

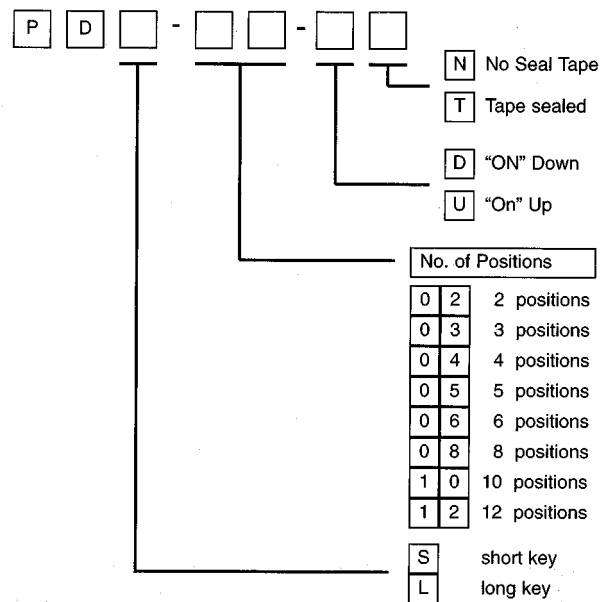


Specification / Spezifikation

Mechanical Life: min 5.000 switch operations each
 Electrical Life: min 2.000 switch operation each
 50 mA, 24 VDC
 Operation force: 400 g +−200 g
 Non switching: 100 mA, 50 VDC
 Switching: 50 mA, 24 VDC
 Circuit: single pole, single contact
 Standard: "On" Down

Mechanische Lebenserwartung:
 min 5.000 Schaltoperation
 Elektrische Lebenserwartung:
 min. 2.000 Schaltoperation
 Schaltkraft: kleiner 800 g
 Dauerlast: 100 mA, 50 VDC
 Schaltlast: max 50 mA, 24 VDC
 Schaltung: einpoliger Schalter

How to order / Bestellanleitung



Example: PDL-08 DN is a Long Key Piano DIP with 8 positions, "On" is up (= "Off" is up) and No Sealing Tape

Models / Modelle

Model No. Modellnummer	No. Positions Schalterzahl	Length in mm" Länge in mm"
PD-02	2	6,26/(0,246)
PD-03	3	9,06/(0,357)
PD-04	4	11,34/(0,446)
PD-05	5	13,88/(0,546)
PD-06	6	16,42/(0,646)
PD-08	8	21,50/(0,846)
PD-10	10	26,58/(1,046)
PD-12	12	31,66/(1,246)

